

System Management Principles Statement



- **Compliance report for June 2014 to August 2014**
- **Summary of balancing actions and breaches for June 2014 to Aug 2014**
- **Performance compared to last year**

Summary Report

	Jun-14	Jul-14	Aug-14
Total Number of Buy Actions	4	13	18
Total Number of Sell Actions	12	6	4
Total	16	19	22

	Jun-14	Jul-14	Aug-14
Number of Material Breaches	0	0	0
Number of Non-Material Breaches	0	0	0

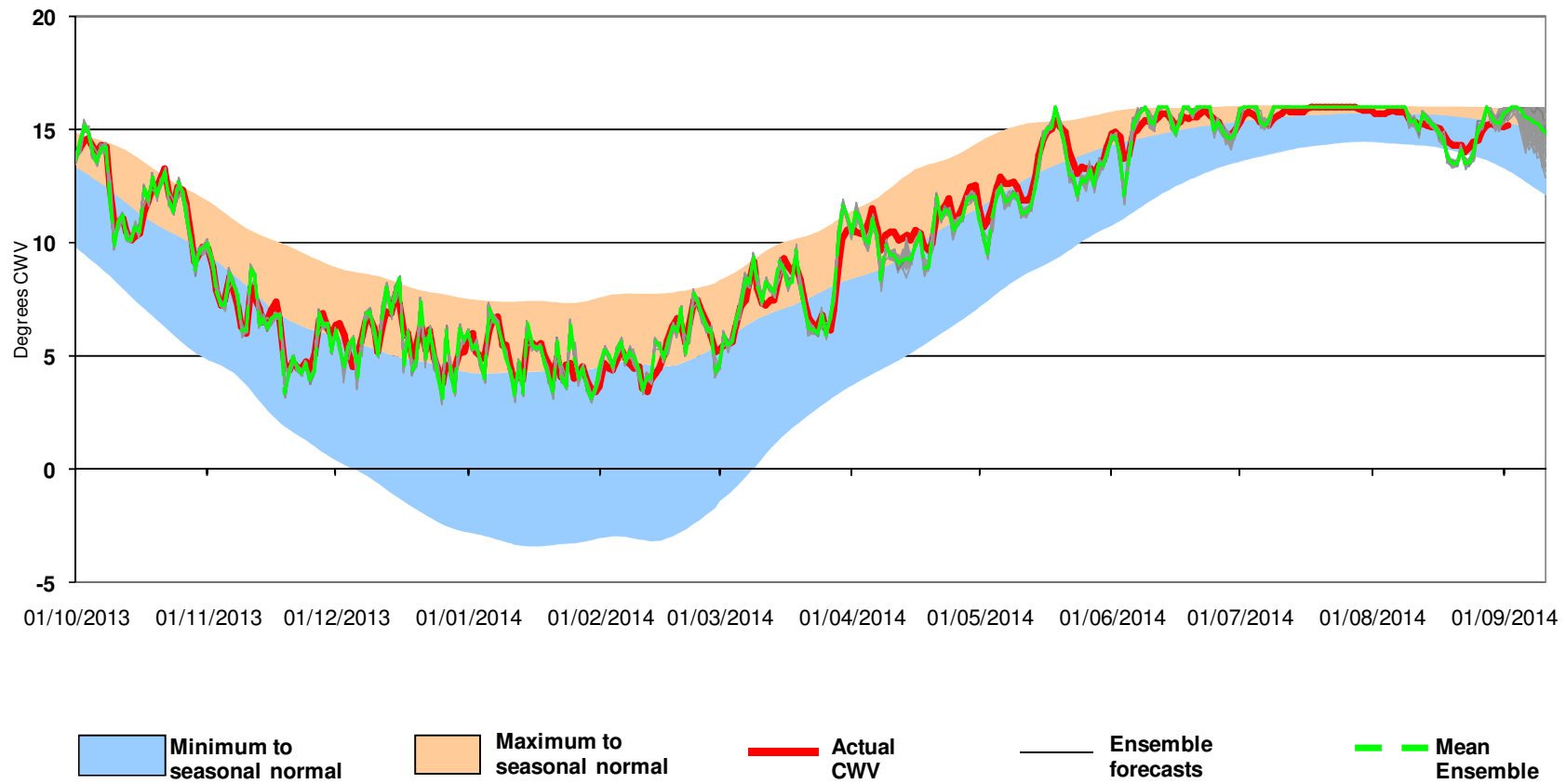
	Aug-14	Aug-13
Number of Balancing Actions (Calendar year to date)	174	273
Number of Material Breaches (Calendar year to date)	0	0
Number of Non-Material Breaches (Calendar year to date)	0	0

Operational Overview



Month-ahead ensemble CWV

October 2013 to Sept 2014 vs. Historical Range

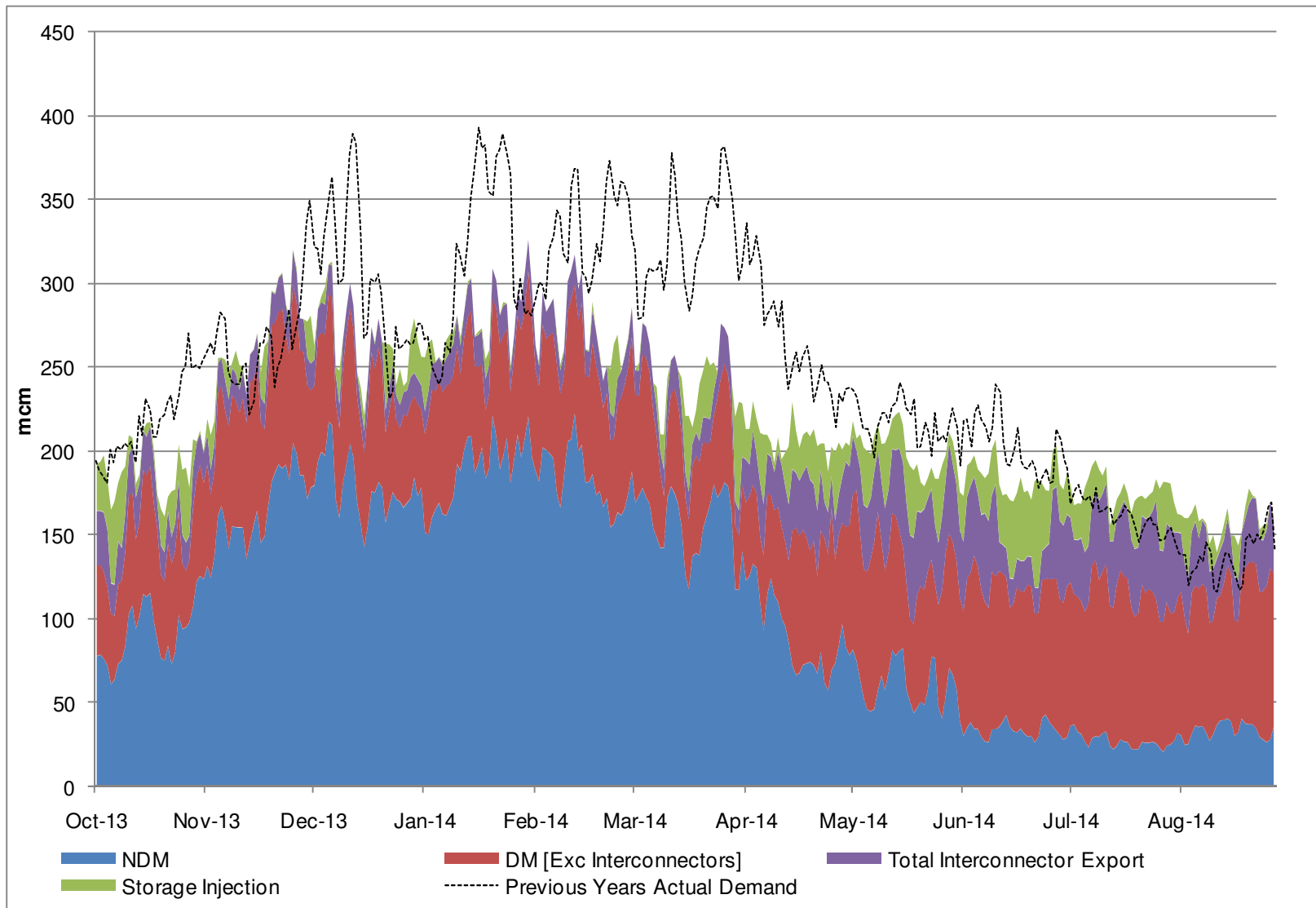


Demands



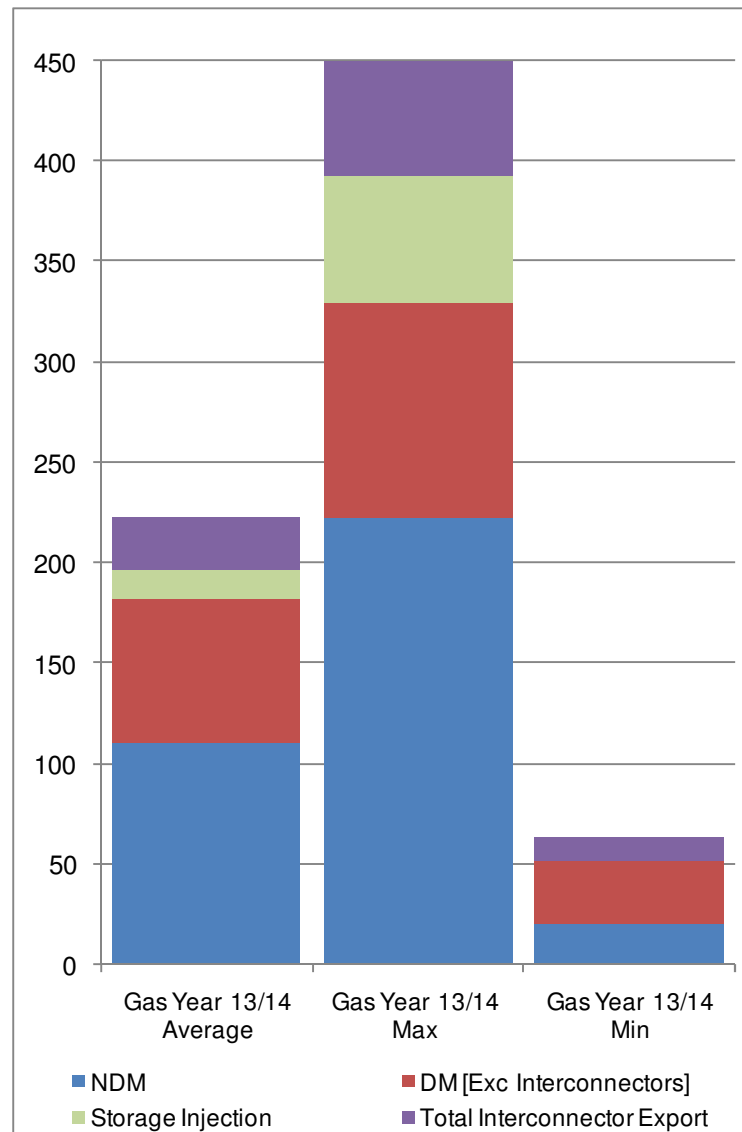
Gas Demand Breakdown

1st October 2013 to 27th August 2014 Vs Previous Year



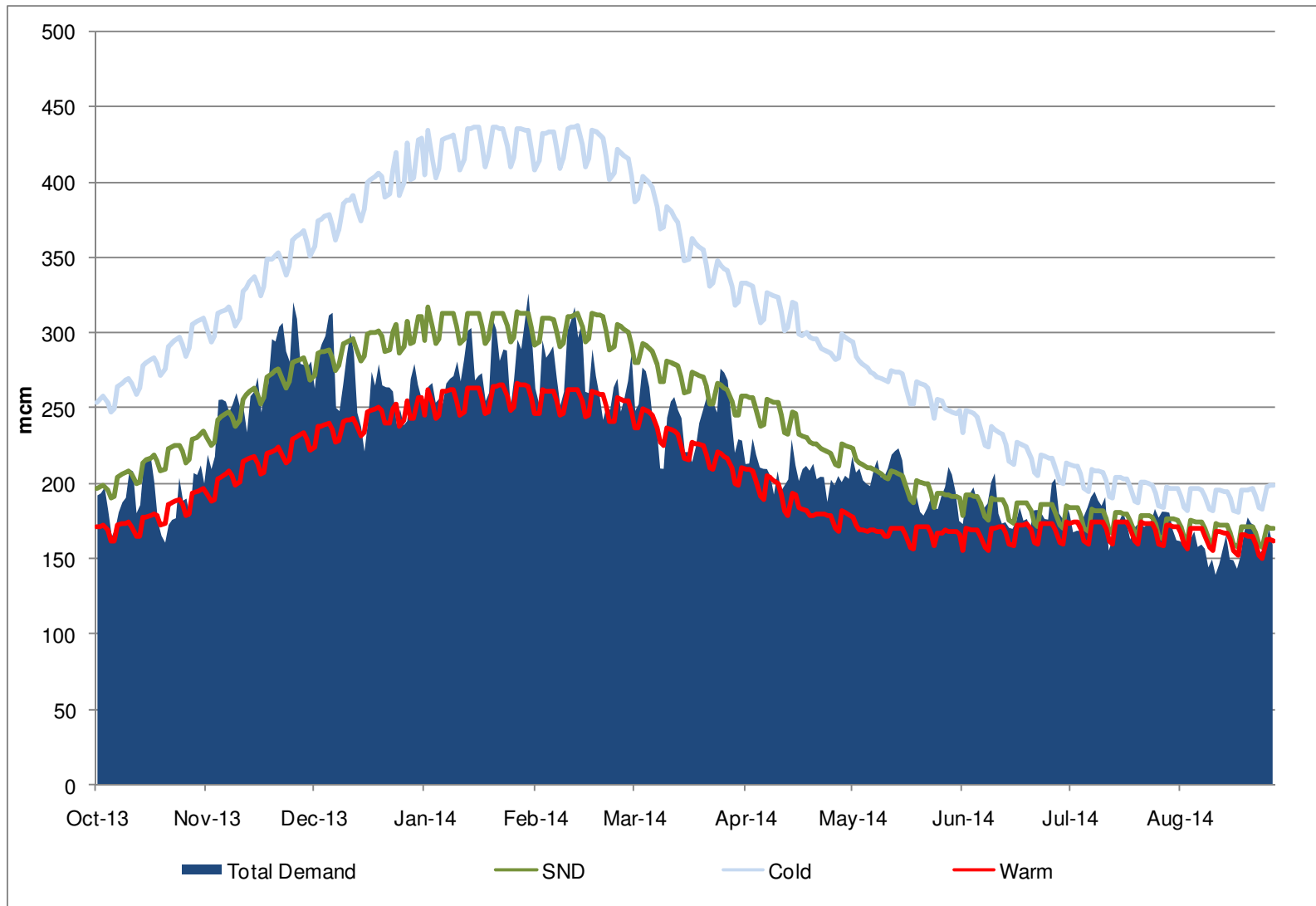
Gas Demand Statistics

1st October 2013 to 27th August 2014



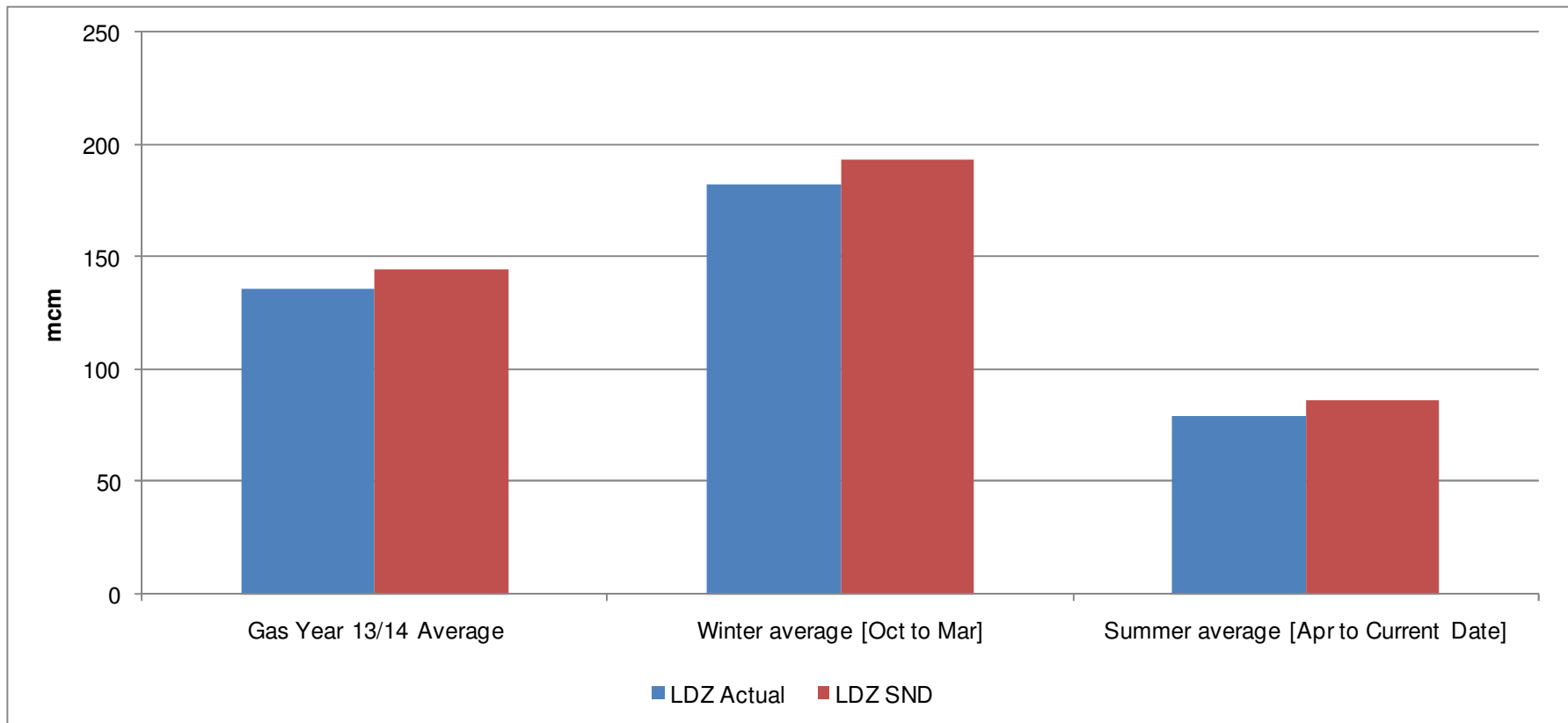
Gas Demand Vs SND / Cold / Warm

1st October 2013 to 27th August 2014



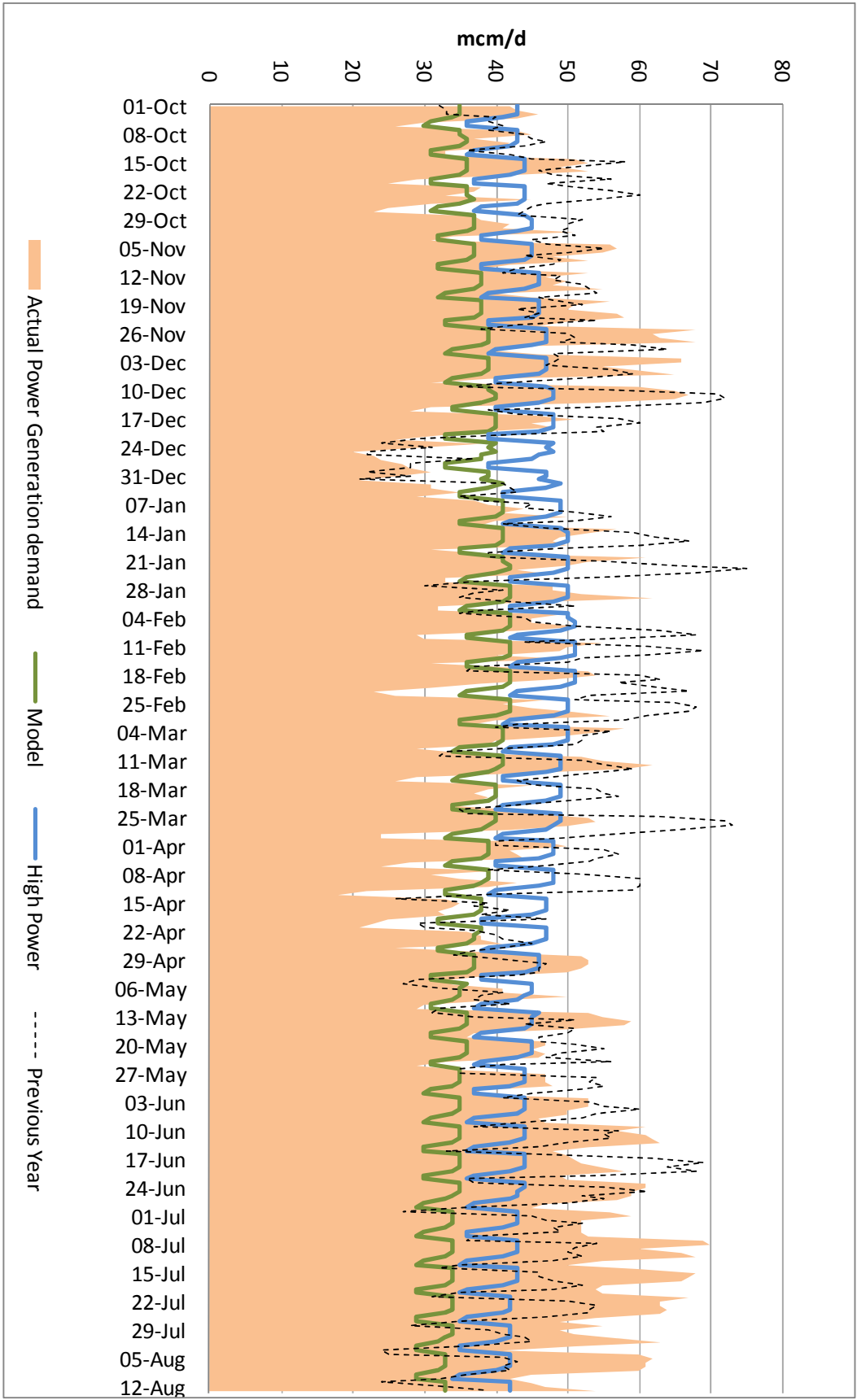
LDZ Actual Demand Vs LDZ SND

1st October 2013 to 28th August 2014



Gas Consumption for Power Generation nationalgrid

October 2013 to Aug 2014

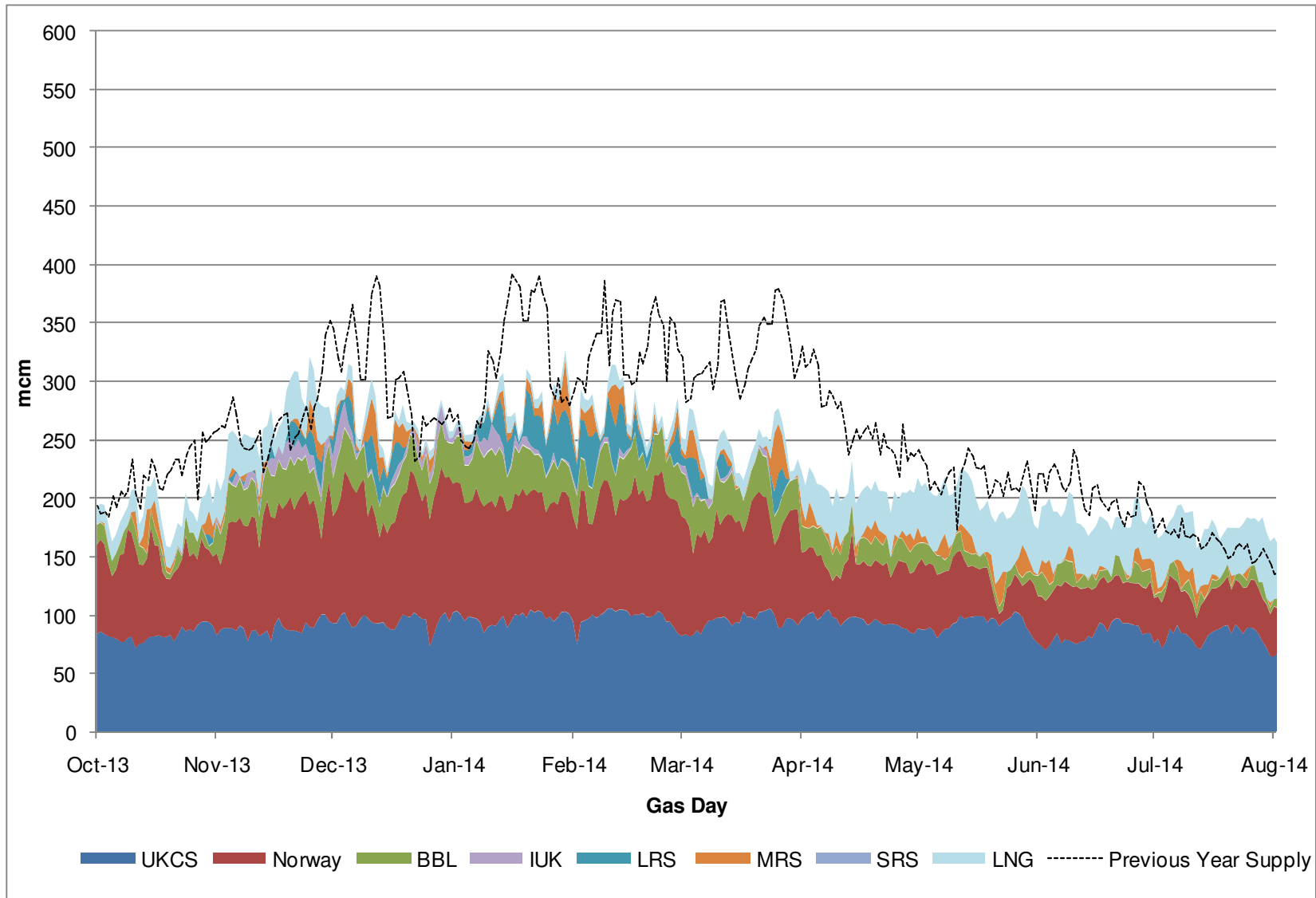


Supplies



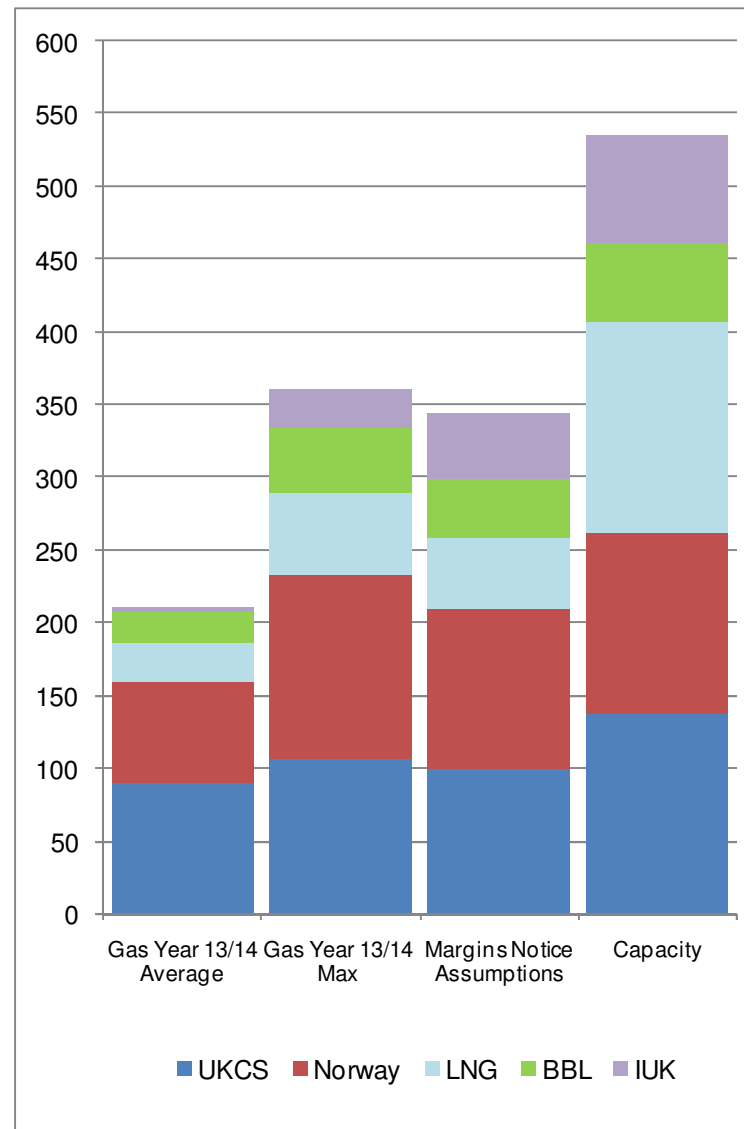
Gas Supply Breakdown

1st October 2013 to 26th August 2014 vs Previous Year



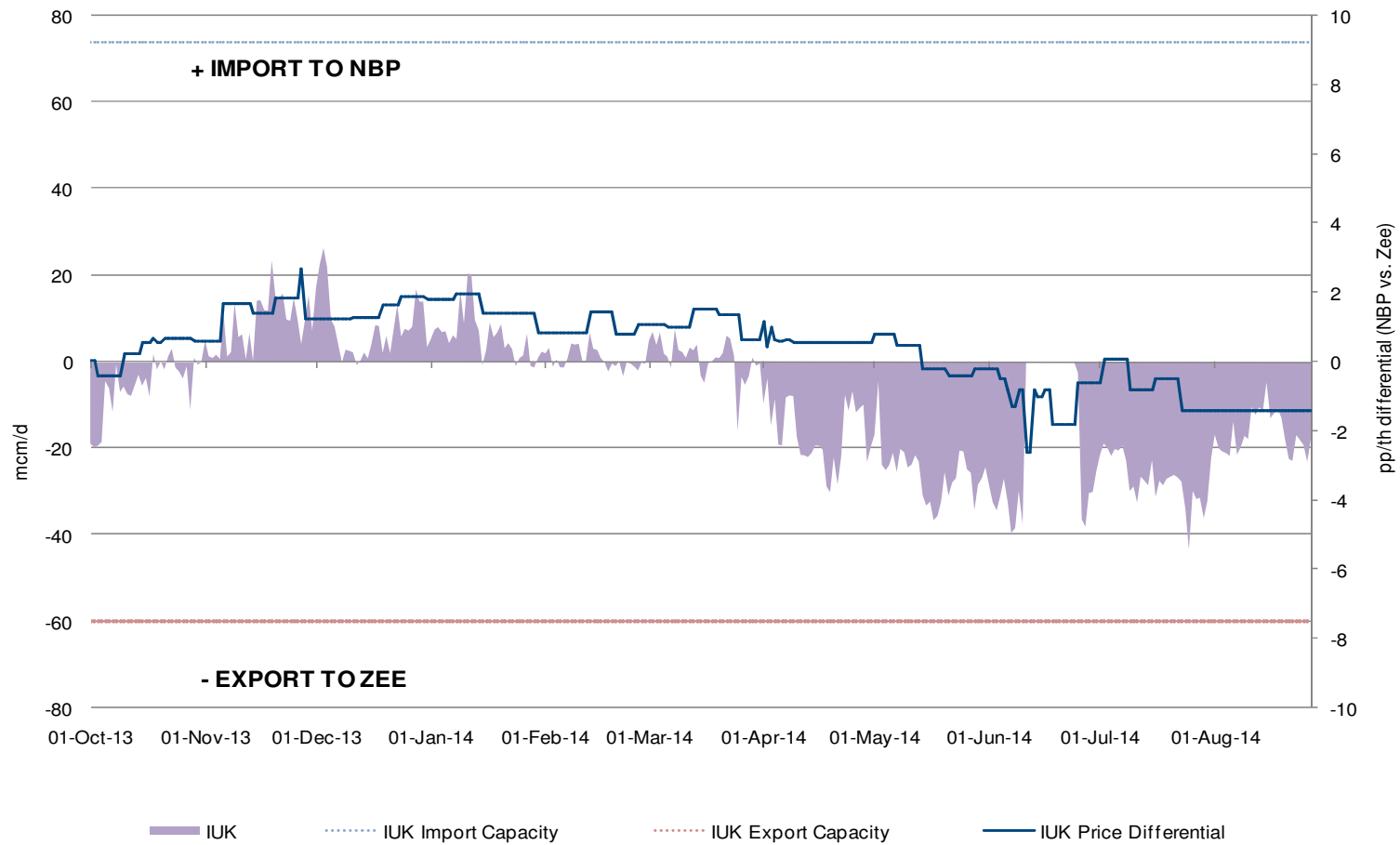
NSS [Non-Storage Supply]

1st October 2013 to 26th August 2014



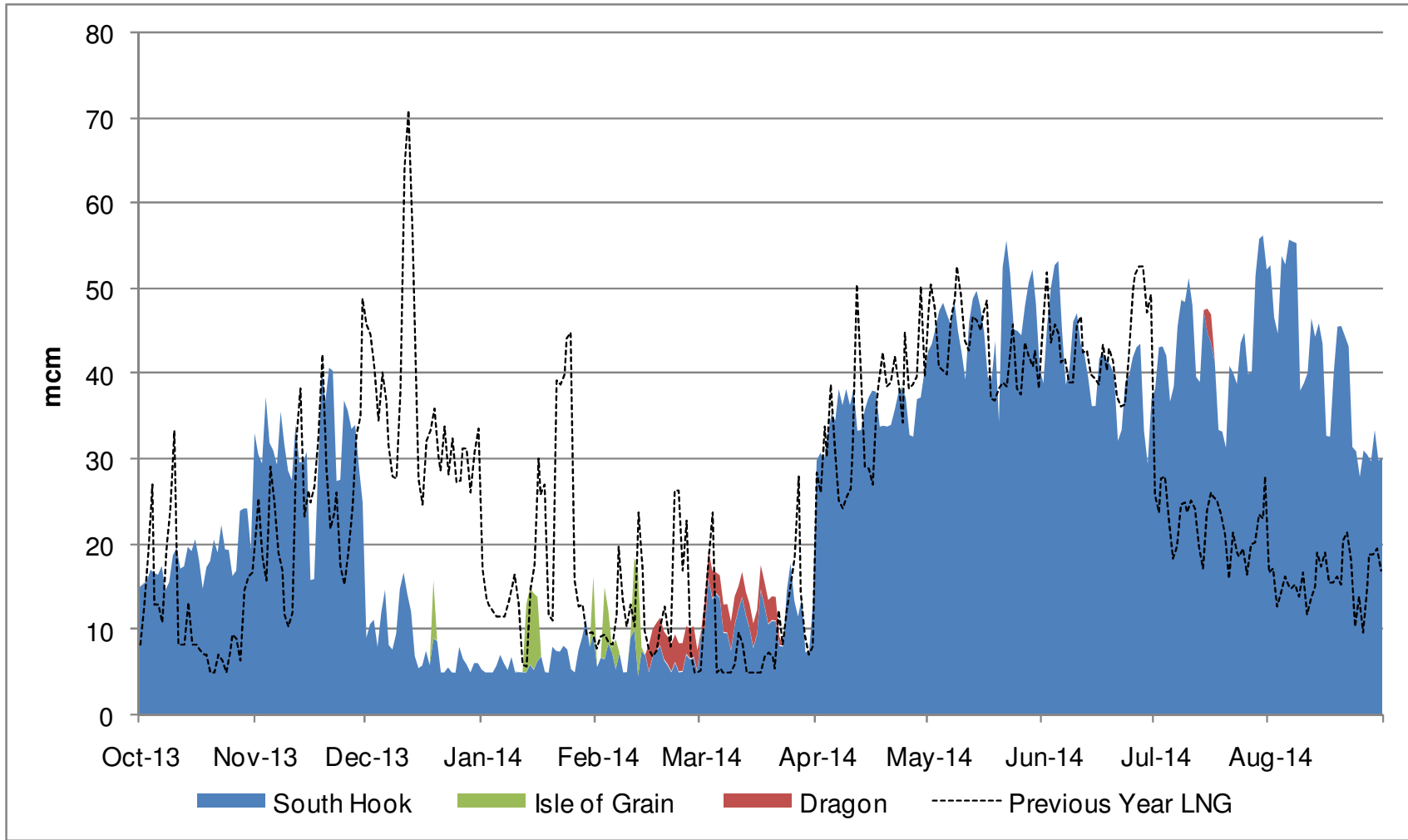
IUK Flows Vs NBP & ZEE Price Differential

1st October 2013 to 27th August 2014



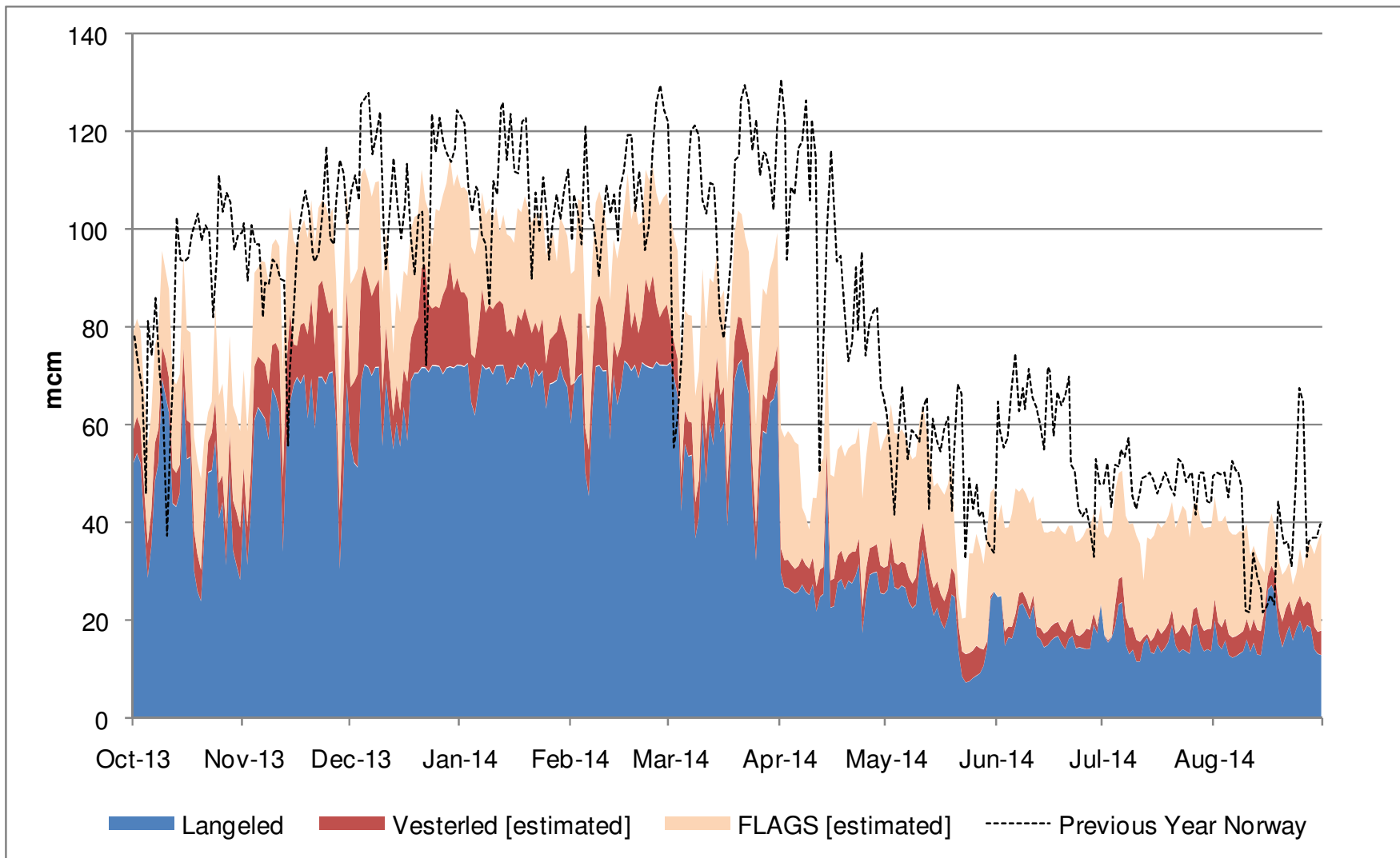
LNG Terminal Flows

1st October 2013 to 31st August 2014



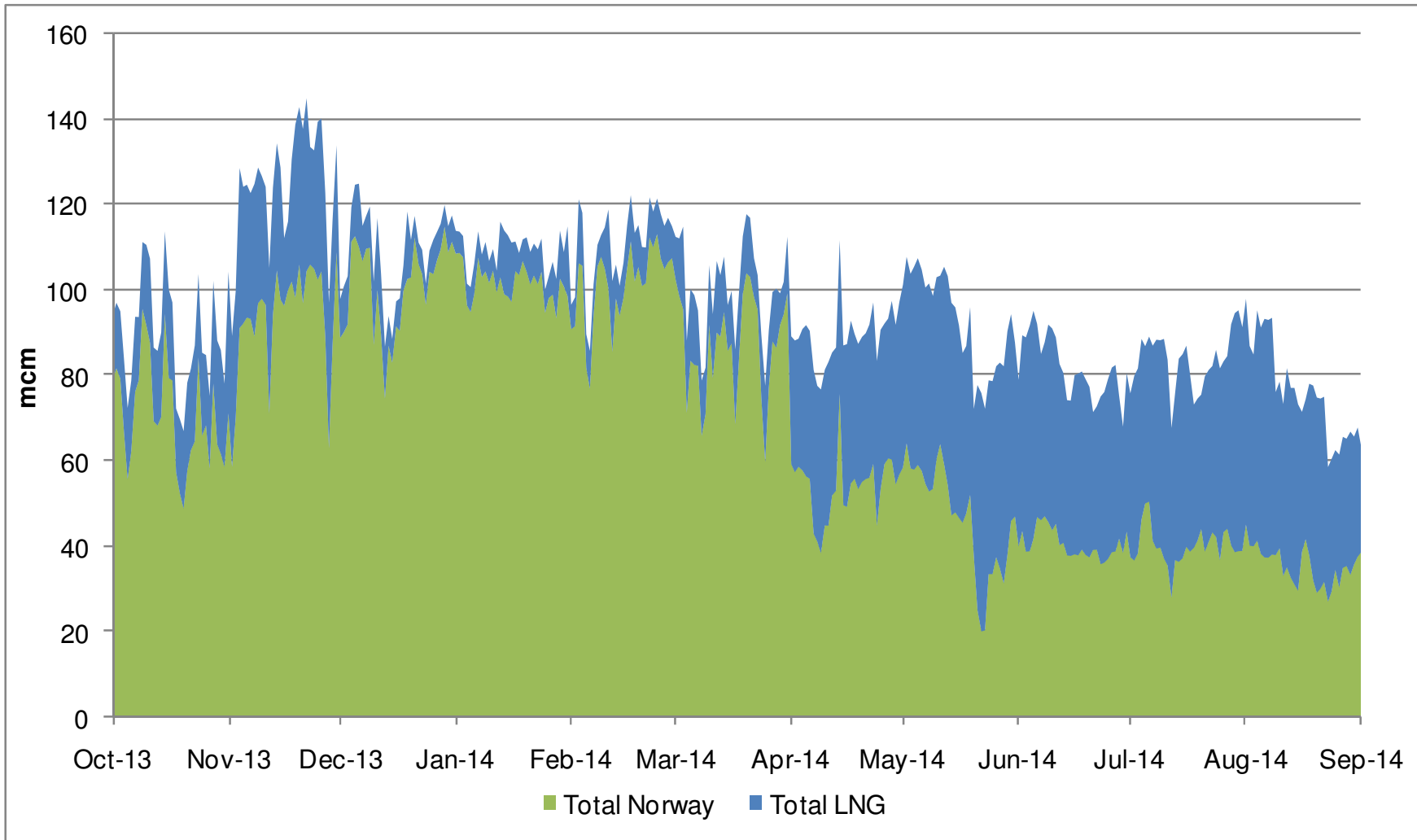
Norway Flows

1st October 2013 to 31st August 2014



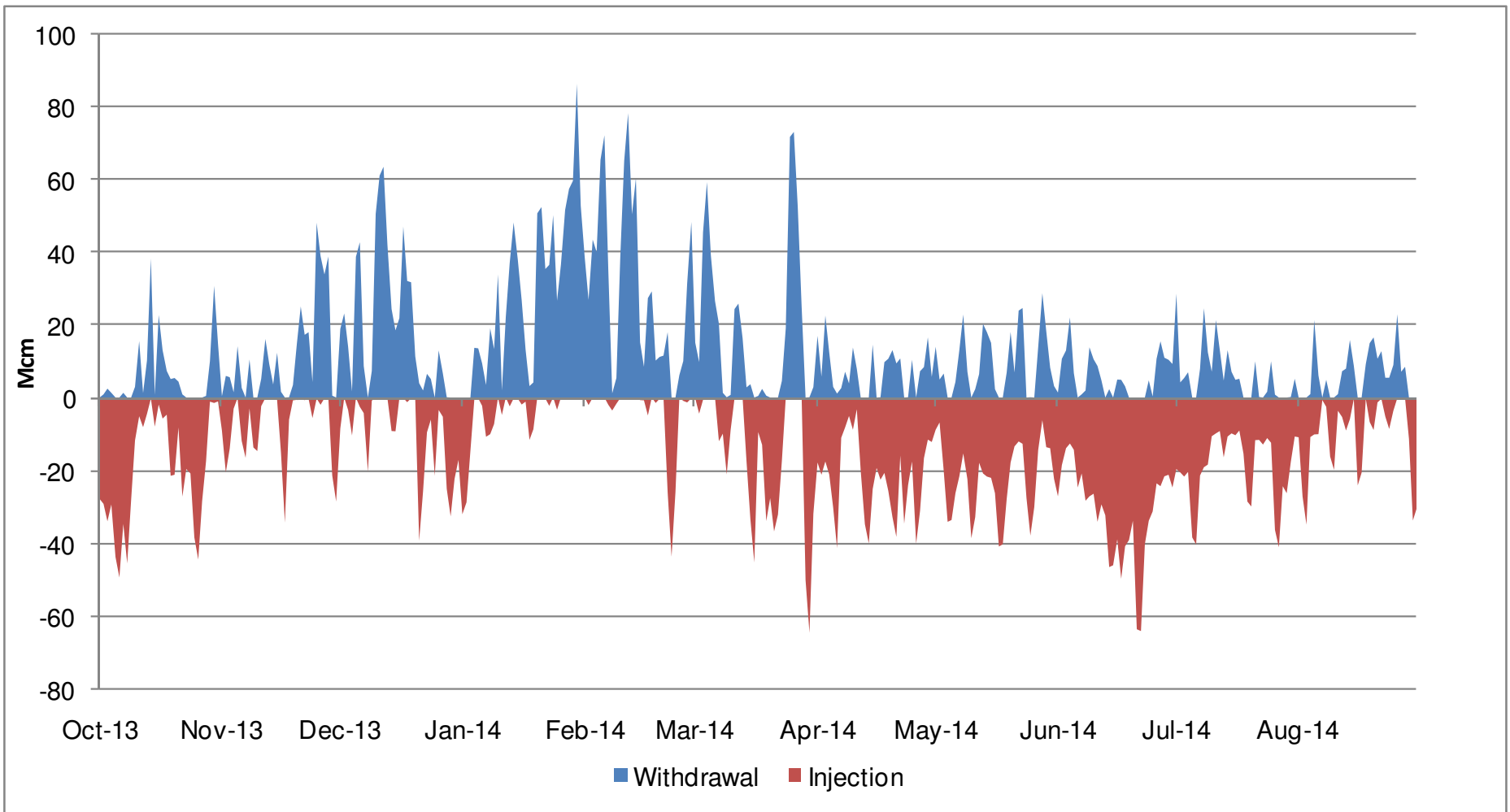
Norway vs LNG Flows

1st October 2013 to 31st August 2014



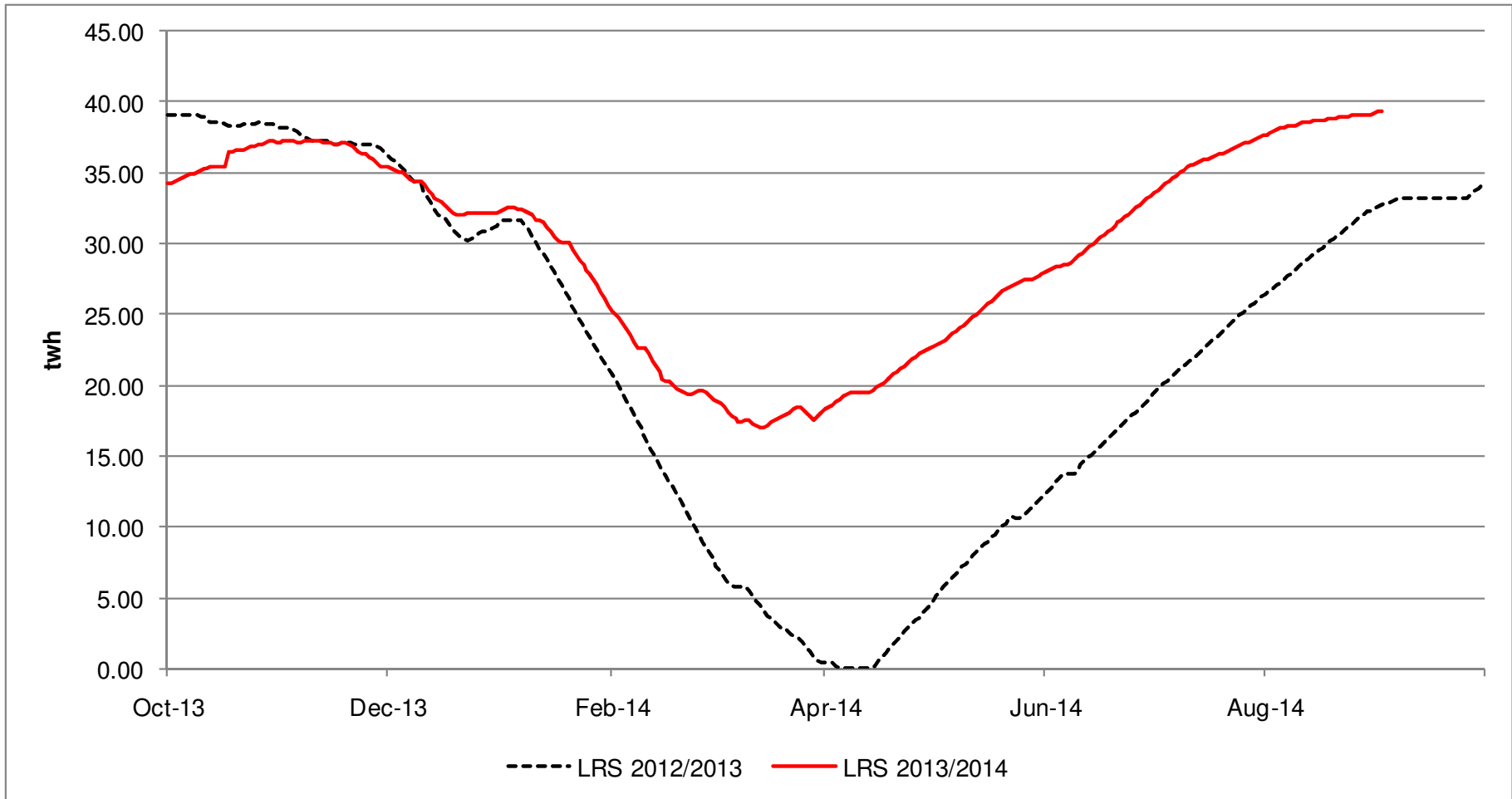
Storage Withdrawal Vs Injection

1st October 2013 to 31st August 2014



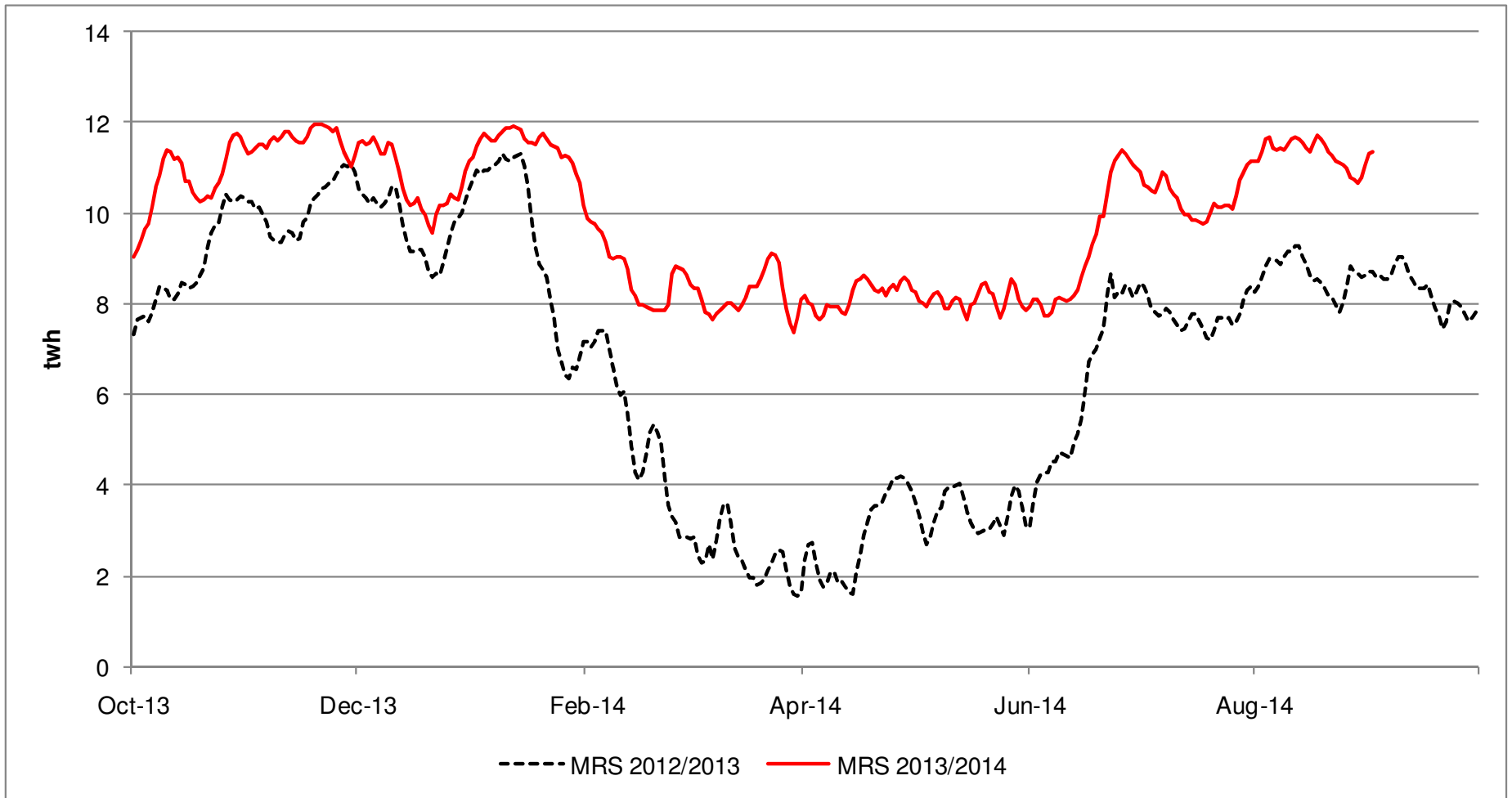
Long Range Storage Stocks [LRS]

1st October 2013 to 2nd September 2014 Vs Previous Years



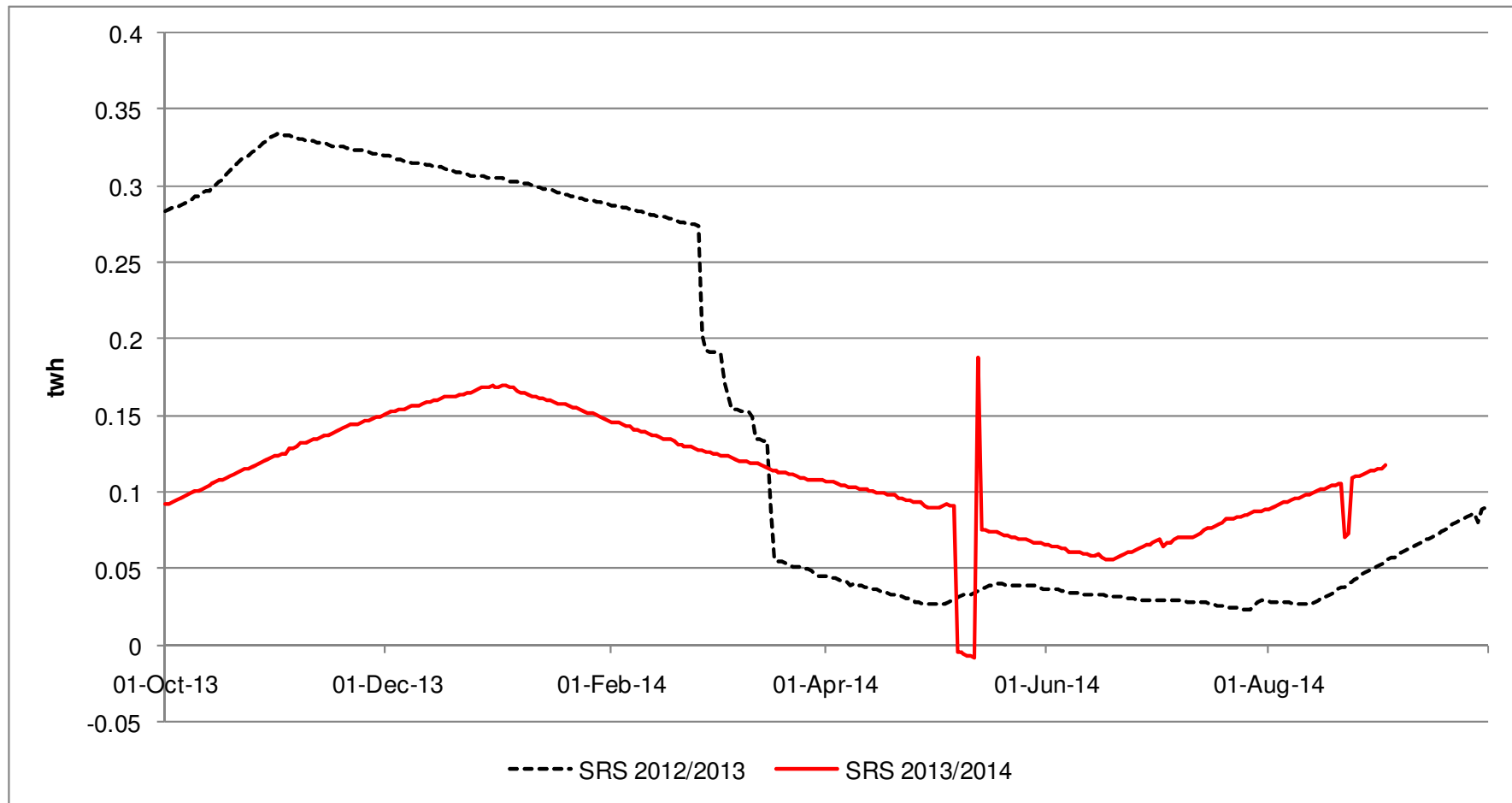
Medium Range Storage Stocks [MRS]

1st October 2013 to 2nd September 2014 Vs Previous Years



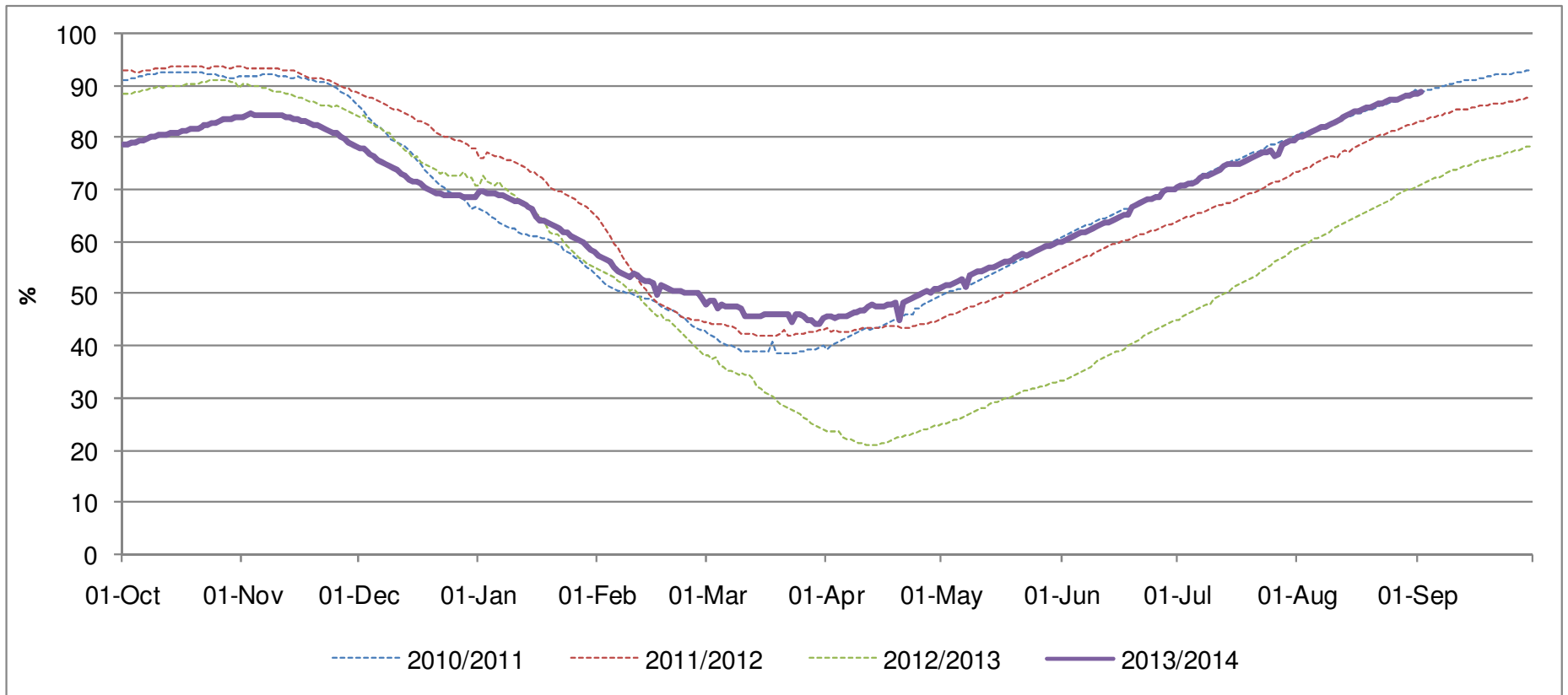
Short Range Storage Stocks [SRS]

1st October 2013 to 2nd September 2014 Vs Previous Years



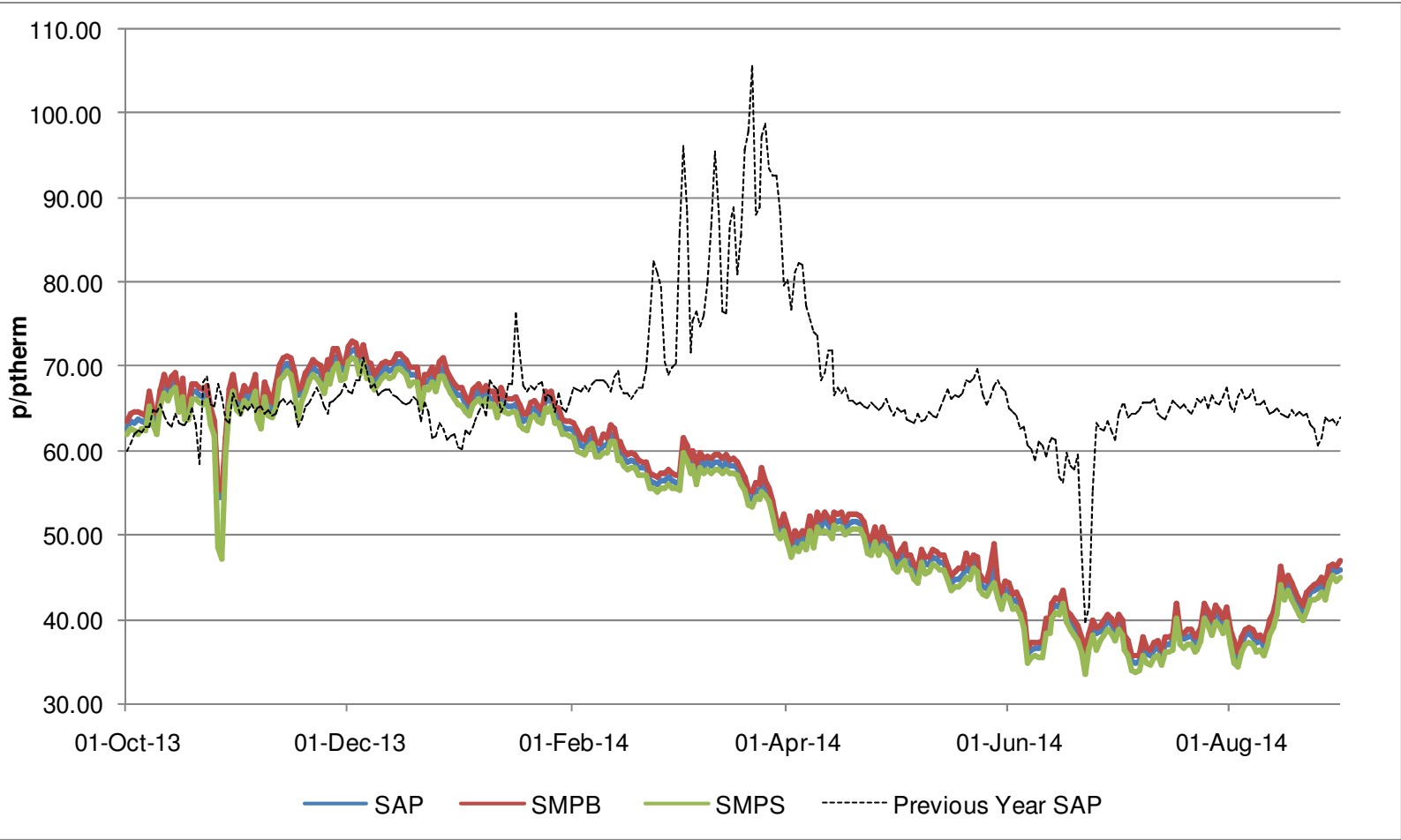
Combined EU Storage Stocks [% Full]

From 1st October 2013 to 2nd September 2014 Vs Previous Years

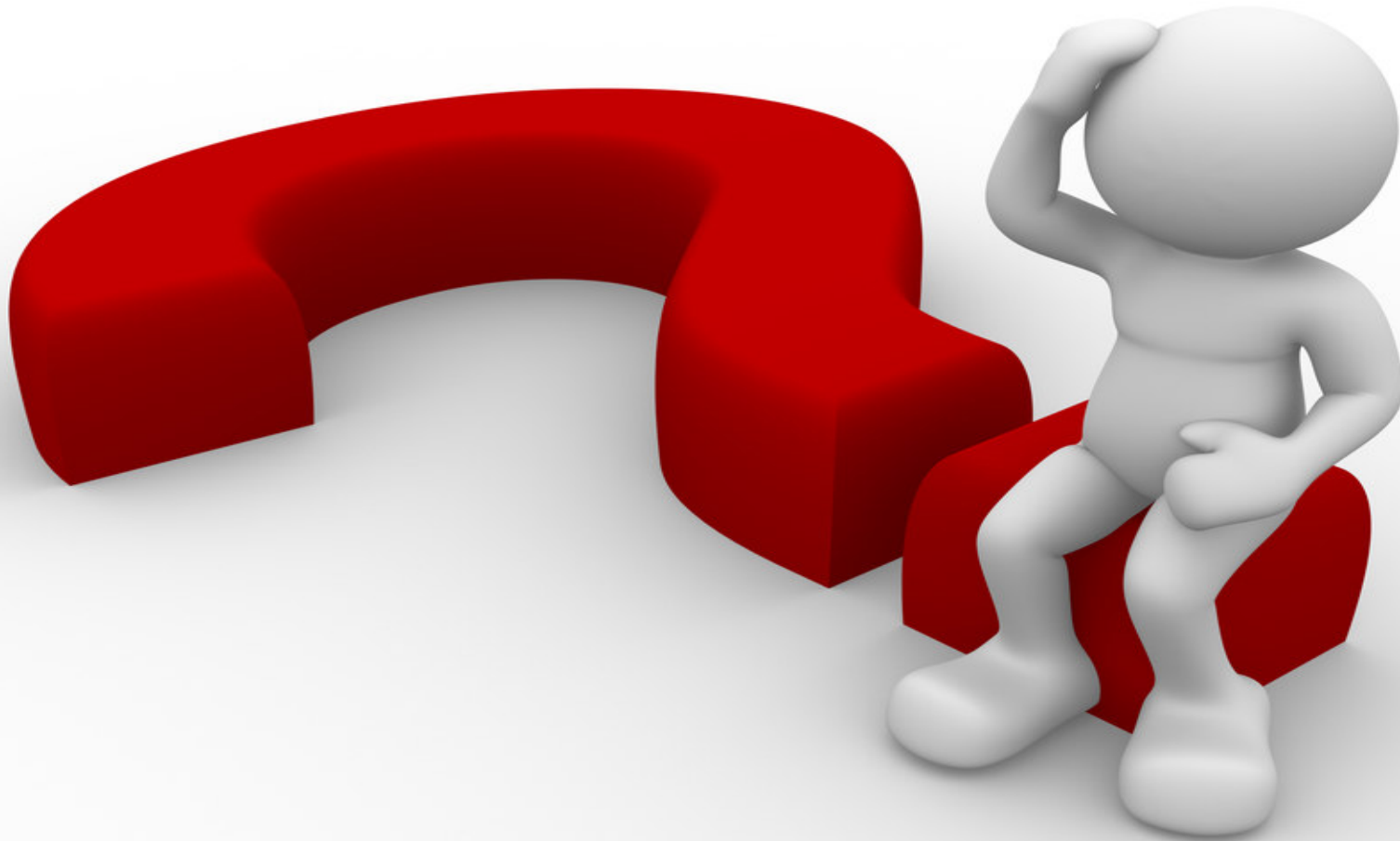


UK Gas Prices

1st October 2013 to 31st August 2014 Vs Previous Years



What Operational Issues Affected Users?



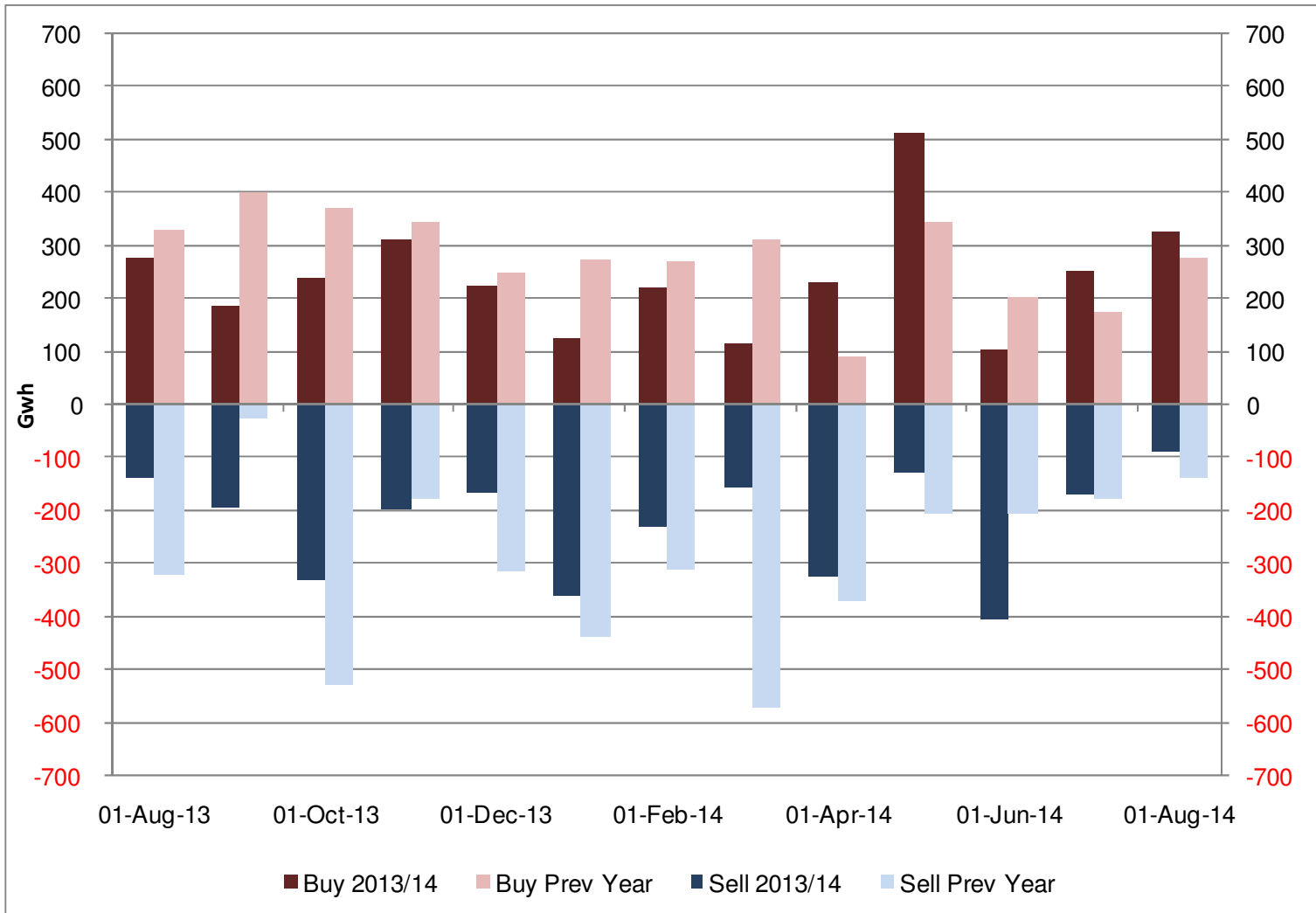
Transporter Actions and Neutrality



- Energy Balancing
- Capacity

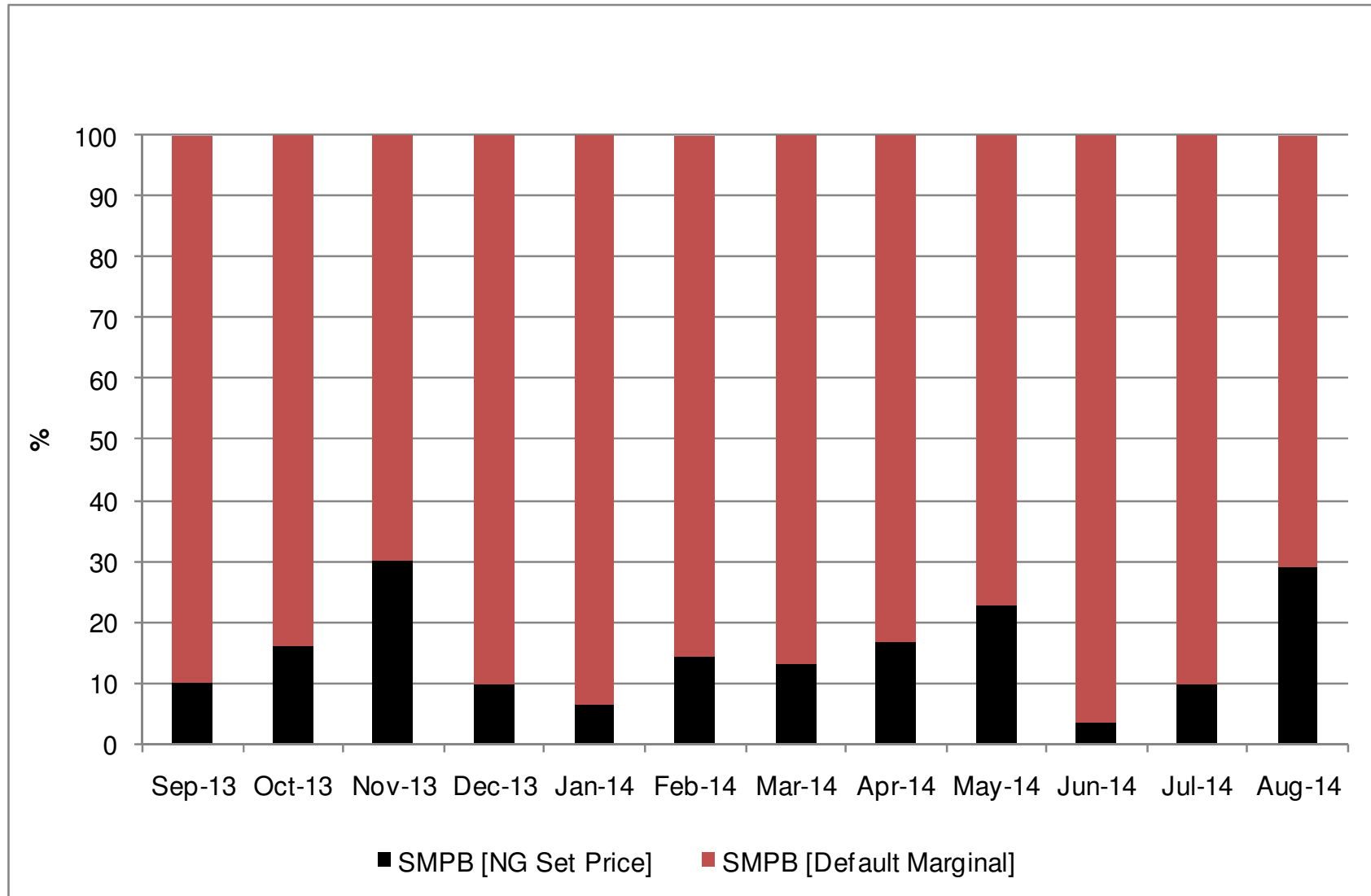
Transporter Energy Traded on the OCM nationalgrid

NGG Monthly Buys and Sells
 Aug 2013 to Aug 2014 Vs Previous Year



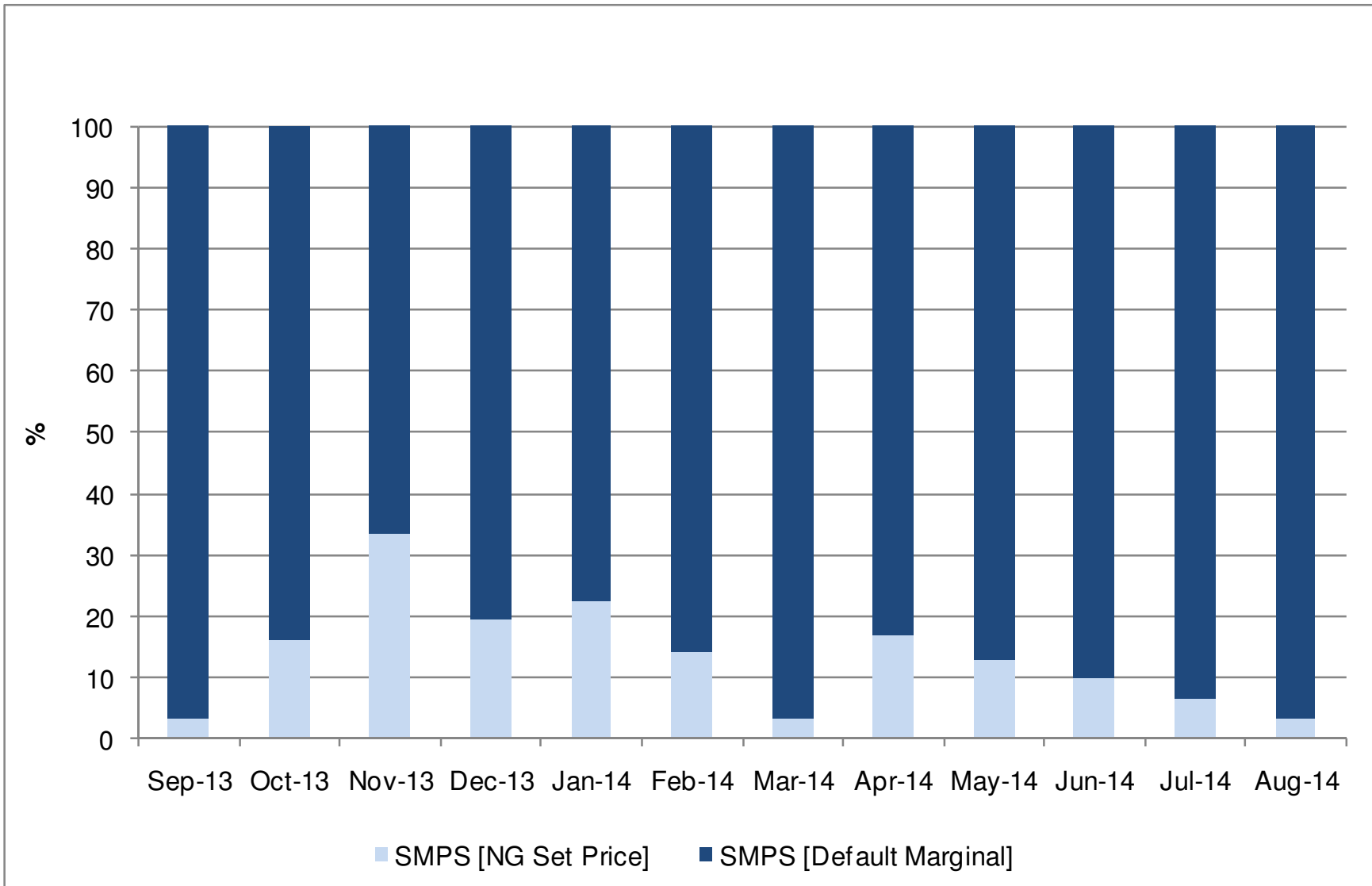
Days of Default SMP Prices [SMPB]

From Sept 2013 to Aug 2014



Days of Default SMP Prices [SMPS]

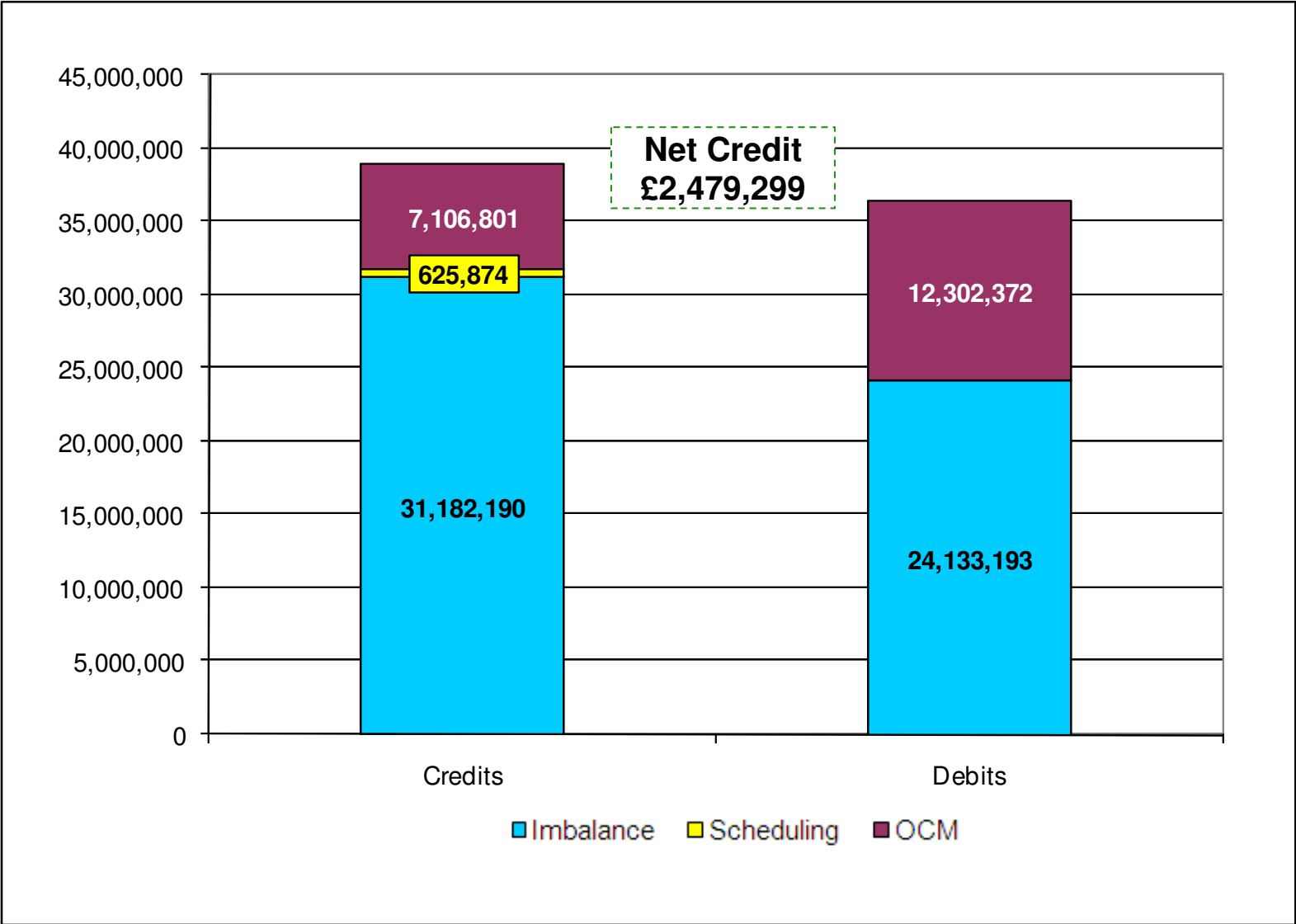
From Sep 2013 to Aug 2014



Energy Balancing – Balancing Costs

Payments / Charges / Net Credit / Debit [Imbalance / Scheduling / OCM]

May - July 2014



Energy Balancing – Balancing Costs

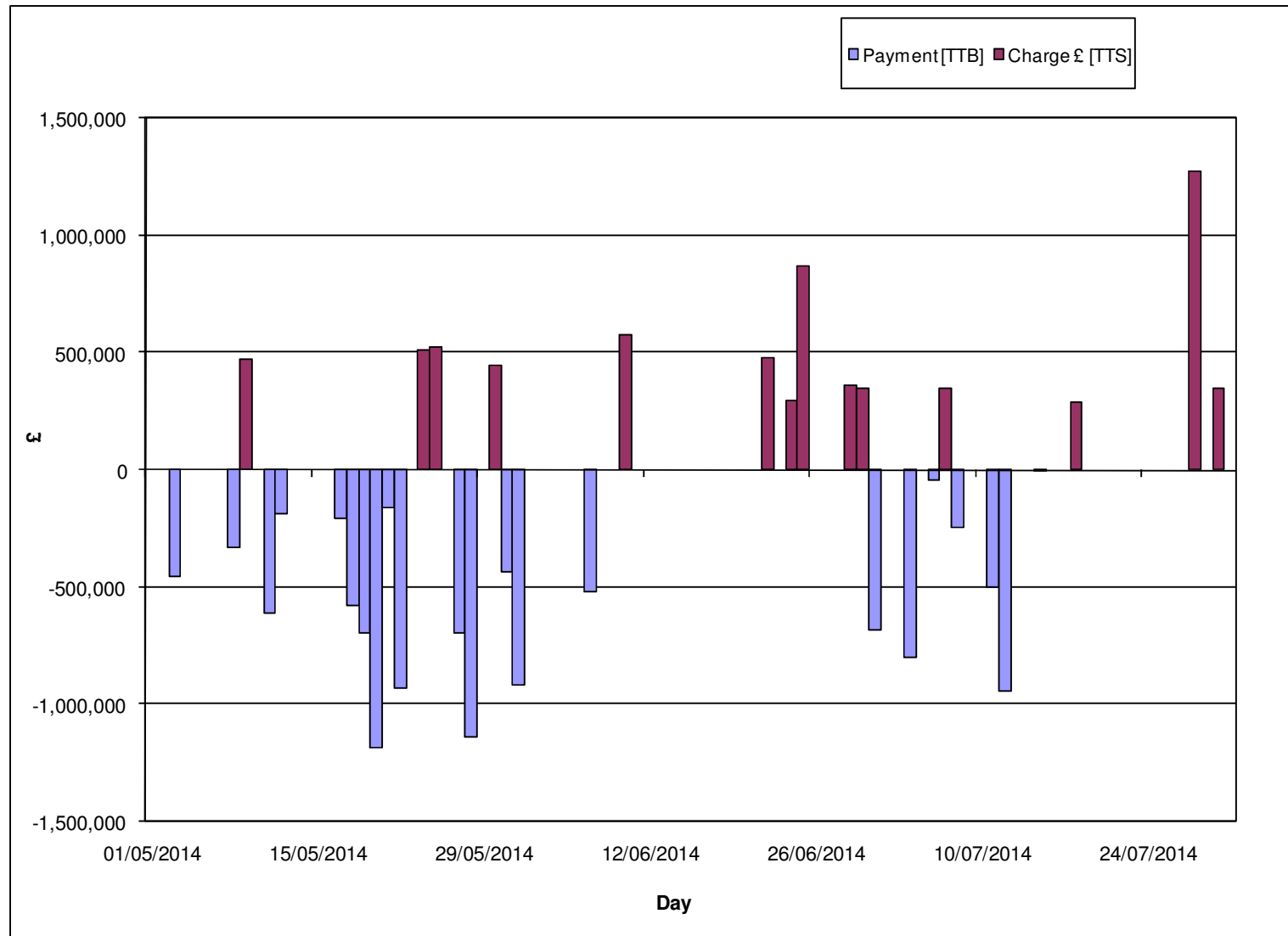
May - July 2014

		May-14	Jun-14	Jul-14
Imbalance	Payment £ [DCS]	-6,565,892	-9,093,615	-8,473,686
	Charge £ [DCT]	14,338,457	8,158,583	8,685,150
Scheduling	Exit Charge £ [DXS]	6,573	6,592	11,776
	Exit Charge £ [EXS]	53,737	45,037	48,898
	Entry Charge £ [ESC]	114,376	109,421	229,463
OCM	Payment £ [TTB]	-7,632,296	-1,441,933	-3,228,143
	Charge £ [TTS]	1,942,318	2,916,747	2,247,736
Balancing Costs		2,257,274	700,831	-478,805

Energy Balancing – Balancing Costs

OCM Payments / Charges

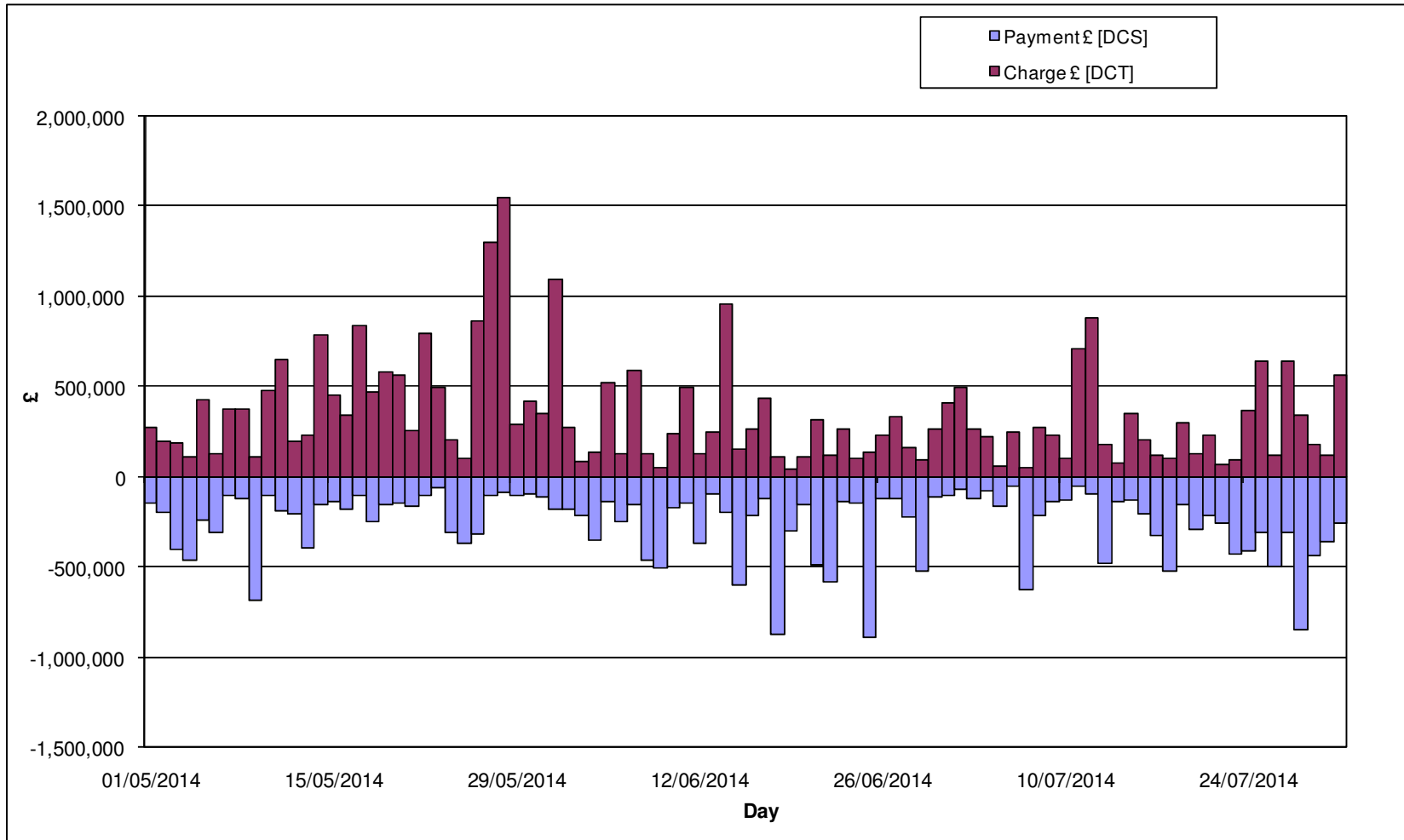
May - July 2014



Energy Balancing – Balancing Costs

Imbalance Payments / Charges

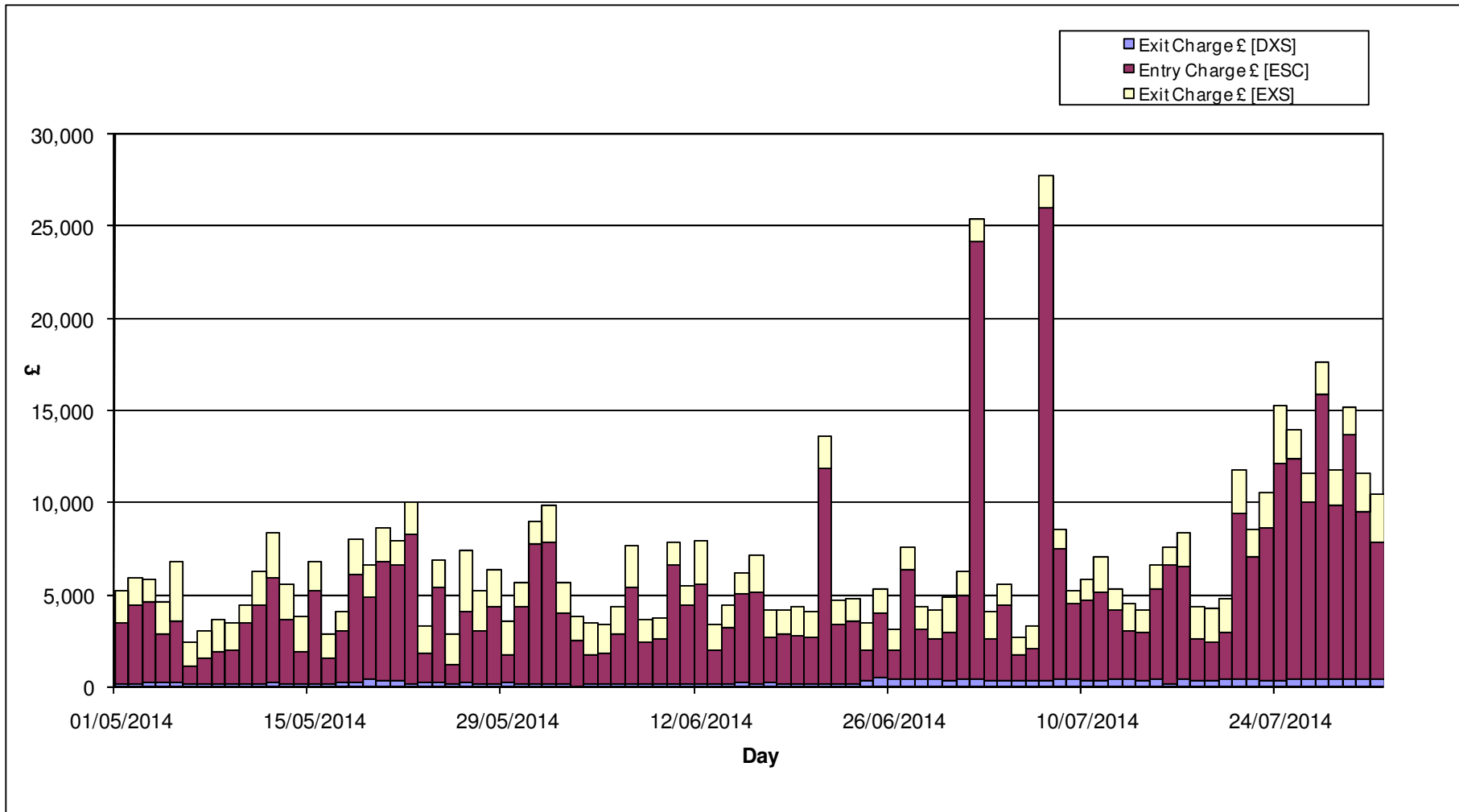
May - July 2014



Energy Balancing – Balancing Costs

Scheduling Charges

May – Jul 2014



Capacity Neutrality

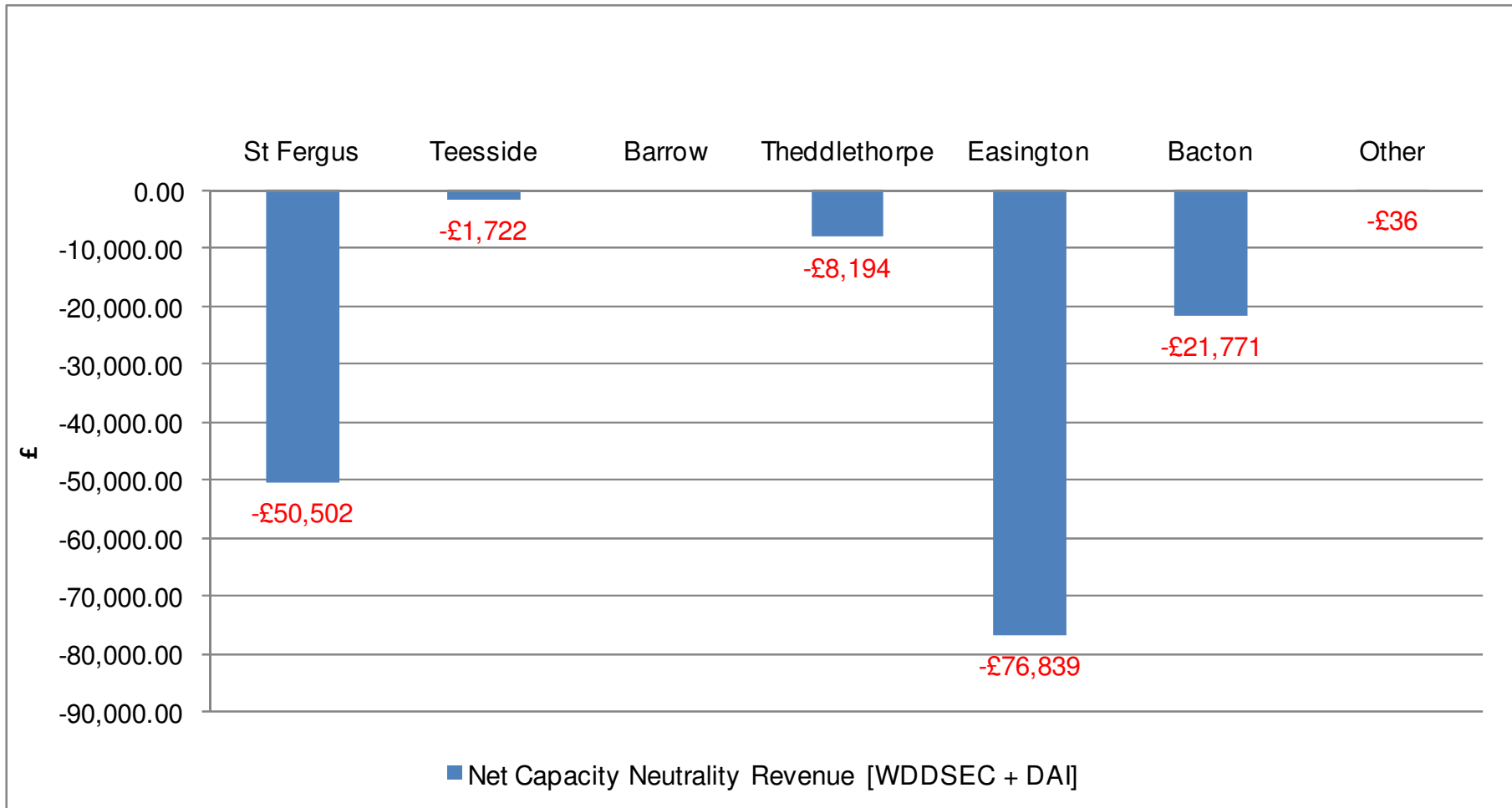
Net Cost / Revenue From 1st April 2014 to 31th August 2014

	Revenue/Costs
WDDSEC/DAI Entry Capacity Revenue	-£159,064
Total Entry Constraint Management Operational Costs	£0
Entry Capacity Overrun Revenue	-£71,614
Non-Obligated Sales Revenue (Entry only)	-£361
Revenue from Locational Sells and PRI Charges	£0
Net Revenue	-£231,039

Net Capacity Neutrality Revenue

[Daily Obligated Entry Capacity and Interruptible Entry Capacity: WDDSEC + DAI]

From 1st April 2014 to 31st August 2014



Capacity Neutrality

Revenues from Entry Cap Overruns and Non-Obligated Sales,
and Locational Sells and PRI Charges.

Totals From 1st April 2014 to 31st August 2014



Month	Entry Cap Overrun Revenue	Non-obligated sales revenue (entry)
Apr-14	-£5,048	-£253
May-14	-£8,271	-£108
Jun-14	-£23,853	-
Jul-14	-£34,442	-
Aug-14	Not yet available	-
Sep-14	-	-
Oct-14	-	-
Nov-14	-	-
Dec-14	-	-
Jan-15	-	-
Feb-15	-	-
Mar-15	-	-
Total	-£71,614 (FY14-15)	-£361(FY14-15)

Month	Locational Sells and PRI charges revenue
Apr-14	£0
May-14	£0
Jun-14	£0
Jul-14	£0
Aug-14	£0
Sep-14	£0
Oct-14	£0
Nov-14	£0
Dec-14	£0
Jan-15	£0
Feb-15	£0
Mar-15	£0
Total	£0 (FY14/15)

Customer Outputs (June – August 2014)

Capacity Constraints	None	No Scalebacks or Buy Backs
Pressure Obligations	21 Breaches of Agreed / Assured Pressures	99.8129% achieved
Maintenance	71 Non Routine Operations completed	100% successful
Rules Breached	127,383 OPNs received. 57,789 non-compliant	35 rejections
Gas Quality Excursions	293 interventions	5 Gas Quality Breach
Operating Margins	None	
Gas Deficit Warnings	None	
Margins Notices	None	